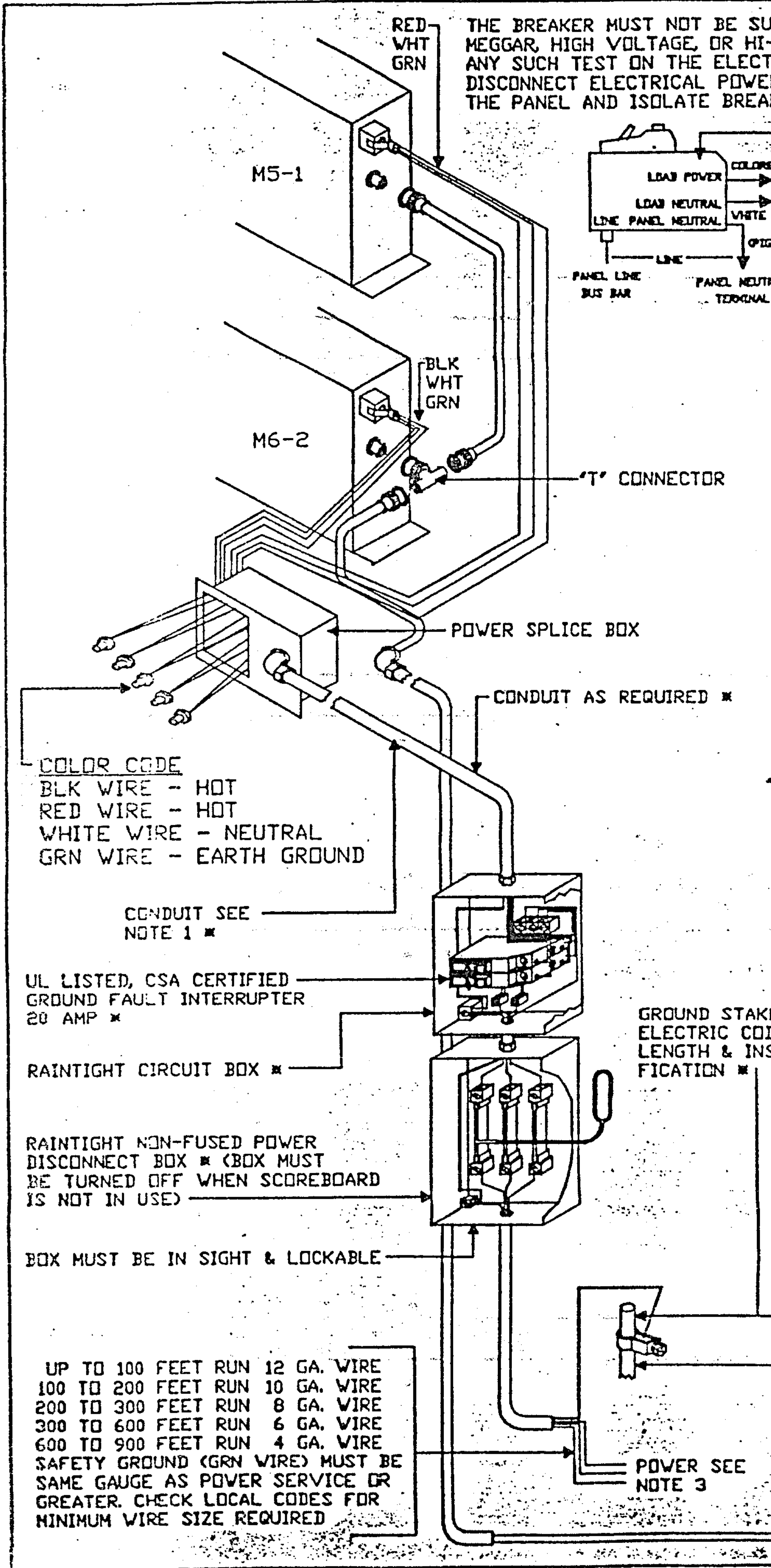
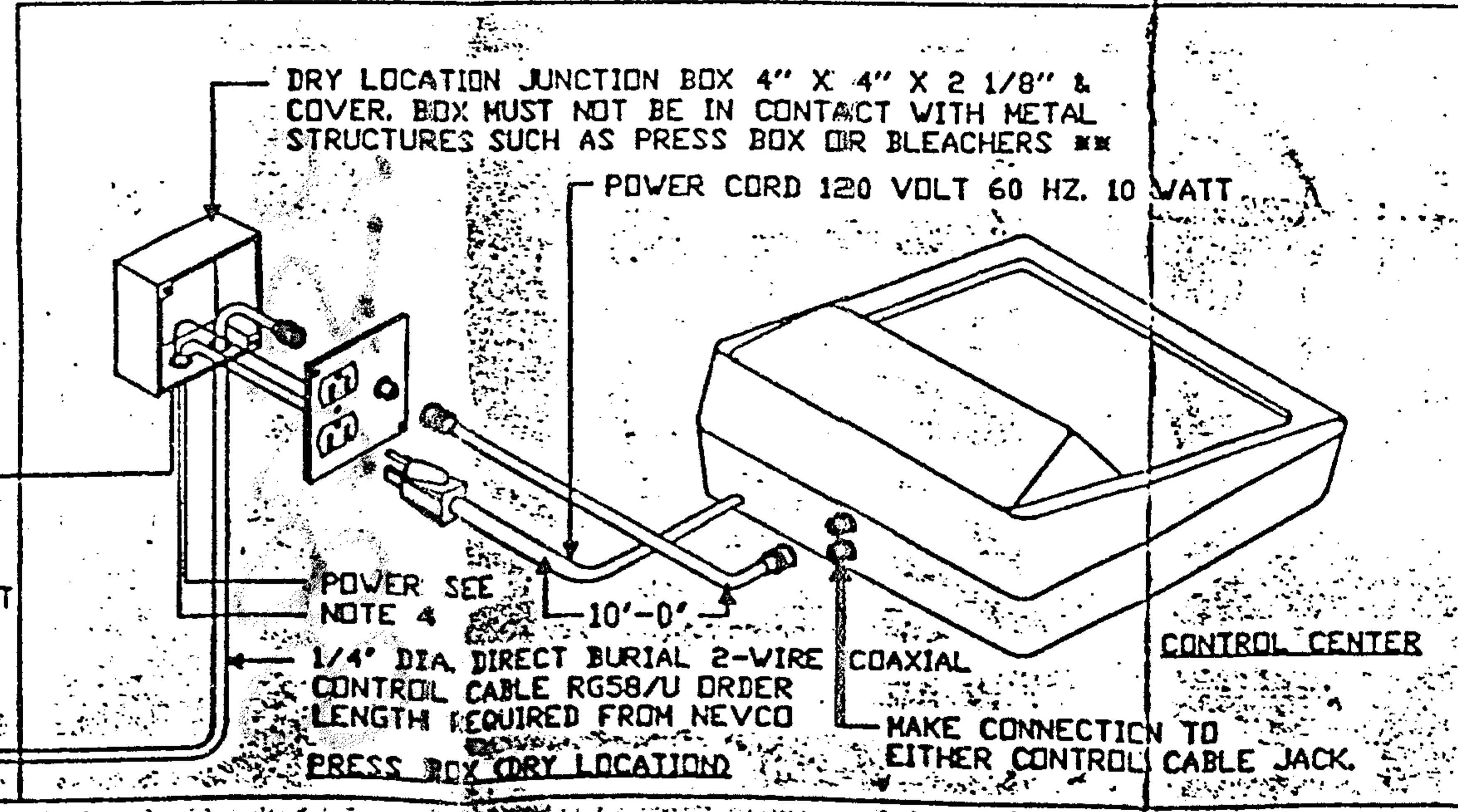
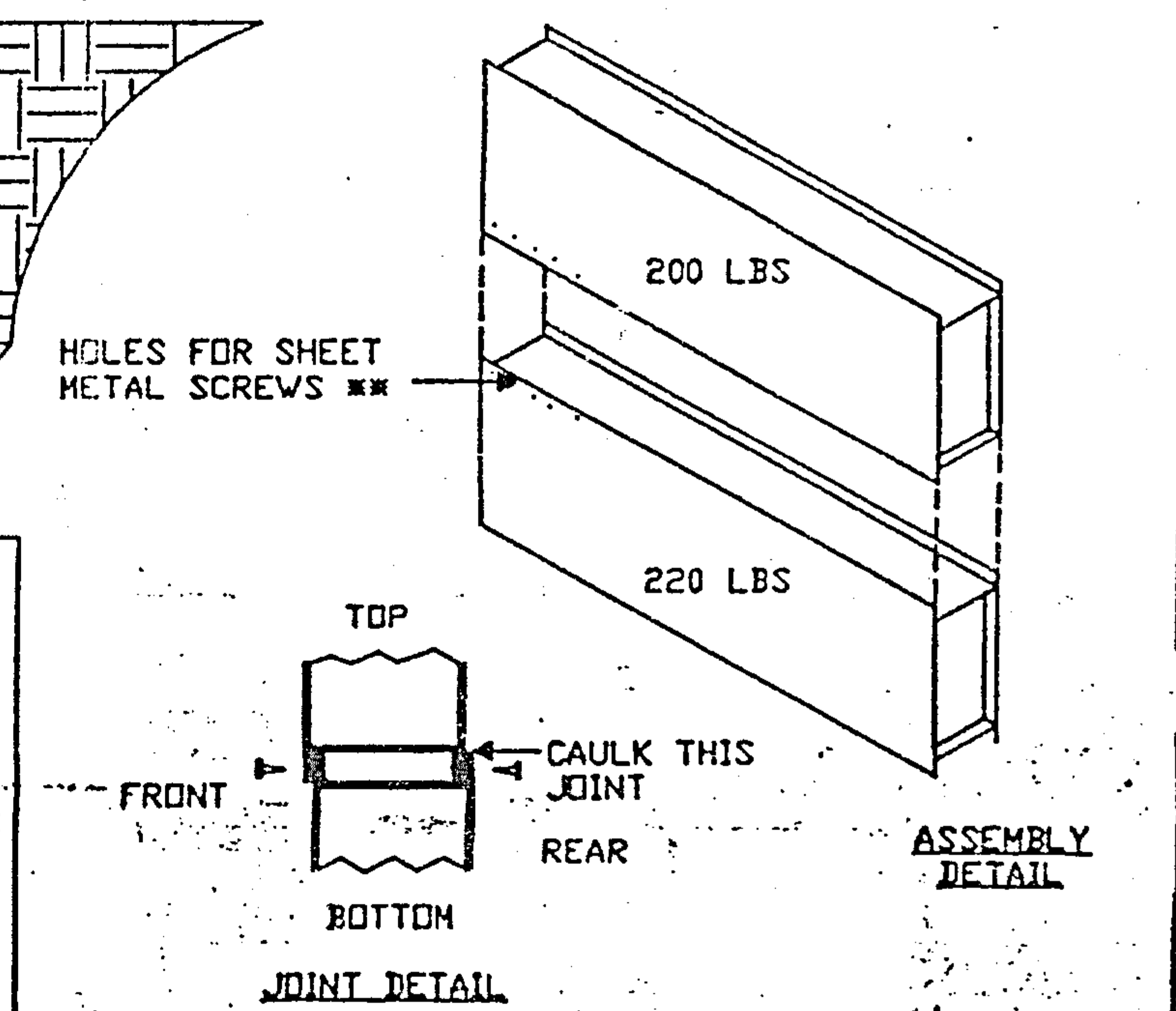
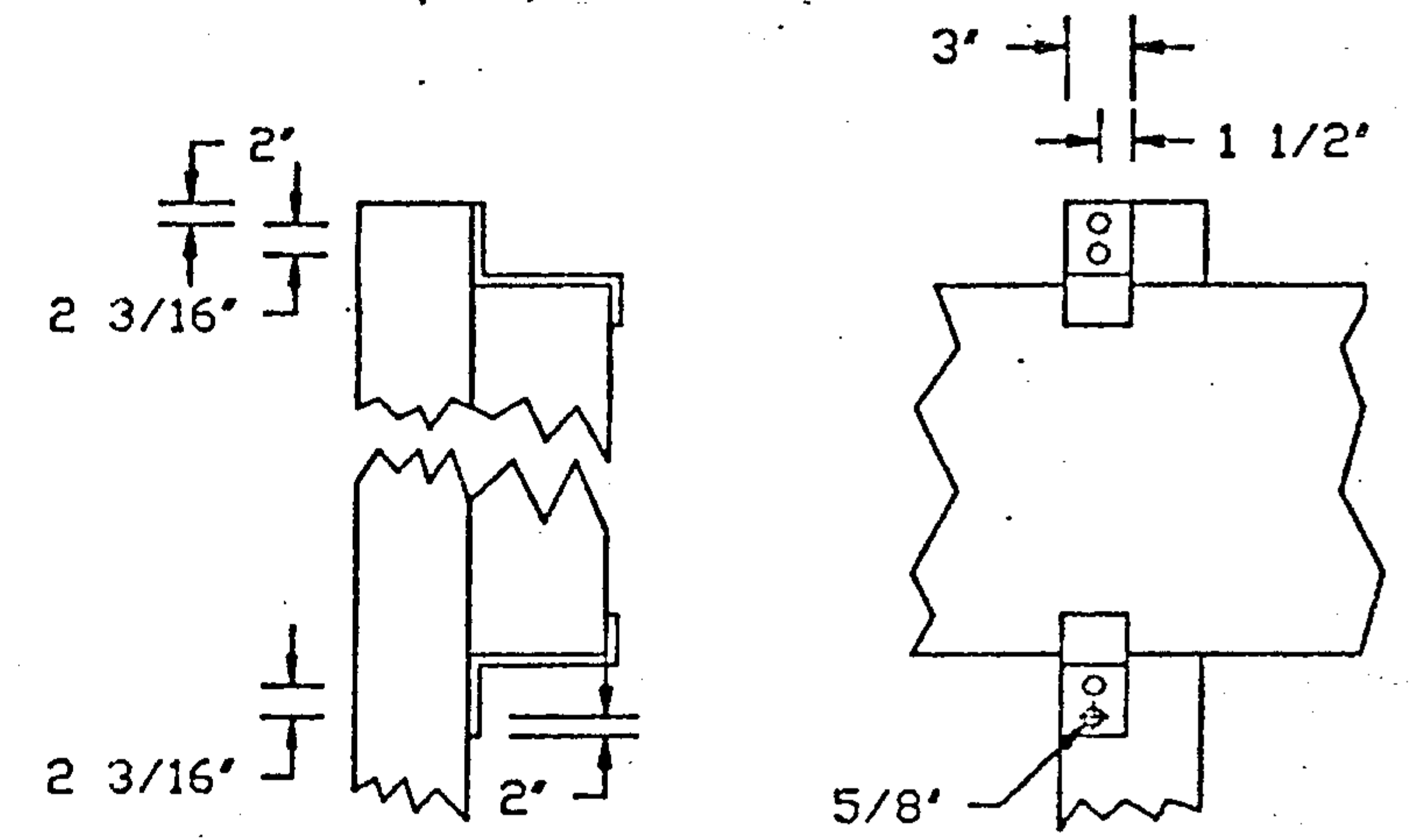
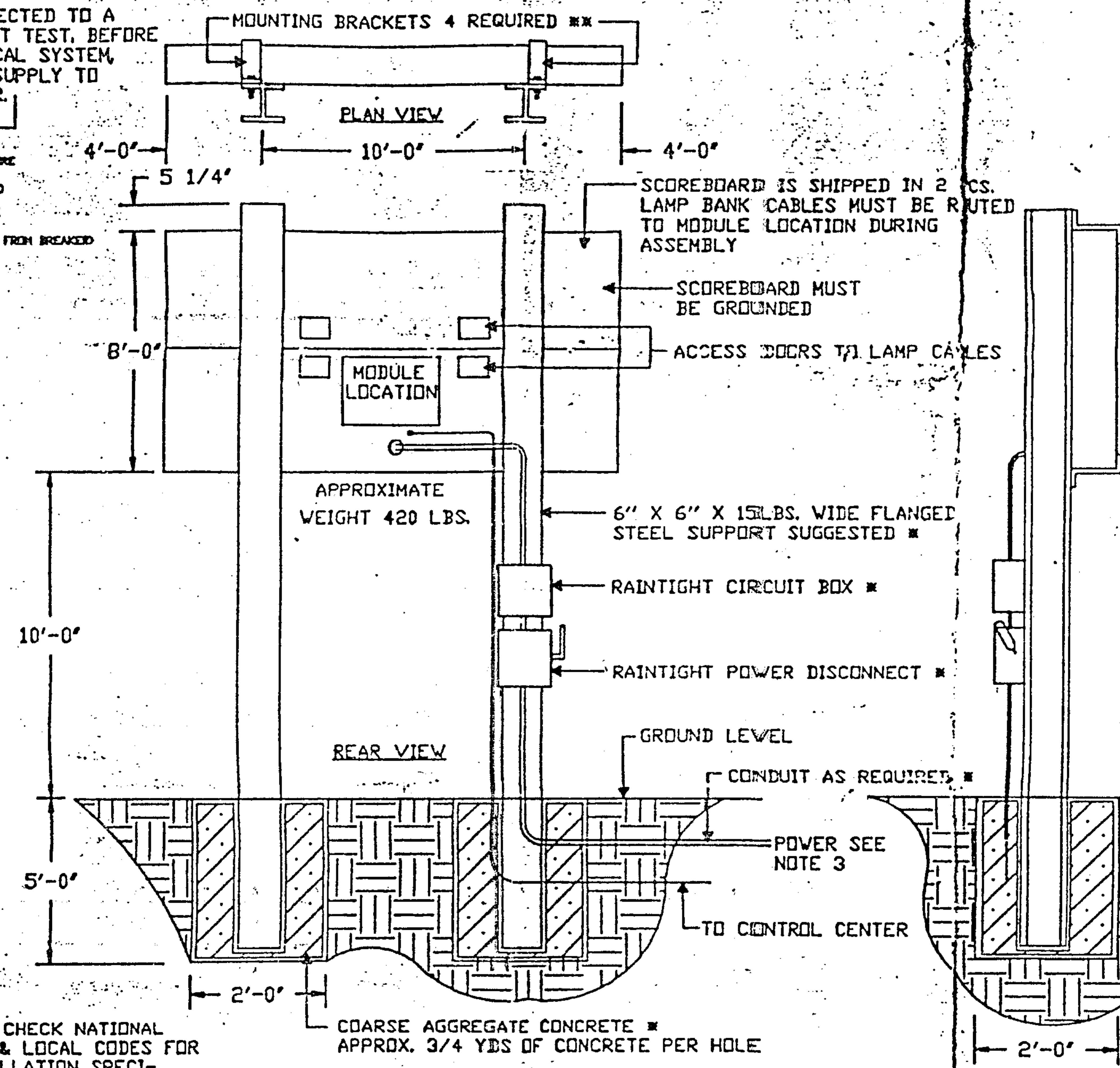
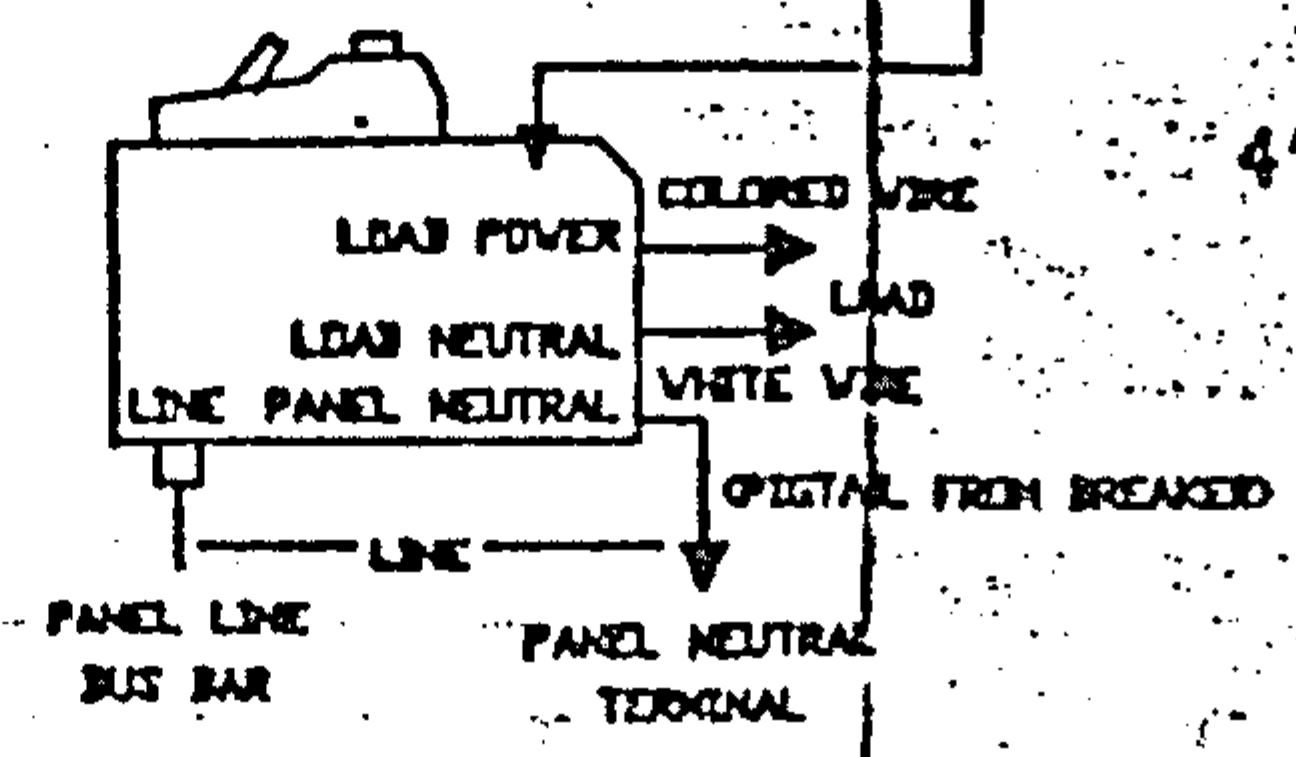


NOTES

- * ITEMS SUPPLIED BY OWNER
 - ** ITEMS SUPPLIED BY NEVCO
1. FOR CONDUIT INSTALLATION 1/2" CONDUIT REQUIRED REMOVE CONNECTOR TO PULL CABLE THROUGH CONDUIT. OPTIONAL: INSTALL 1" CONDUIT AND PULL CABLE WITH CONNECTOR THROUGH CONDUIT.
 2. INSTALLATION MOUNTING IS SUGGESTED METHOD ONLY AND MAY VARY DEPENDING ON SOIL CONDITIONS AND LOCAL CODES.
 3. SUGGESTED POWER AT SCOREBOARD 230/115 V. 60 HZ. 20 AMP
 4. PROTECT WITH A UL LISTED, CSA CERTIFIED GROUND FAULT INTERRUPTER INSTALLED PER NATIONAL ELECTRIC CODE.



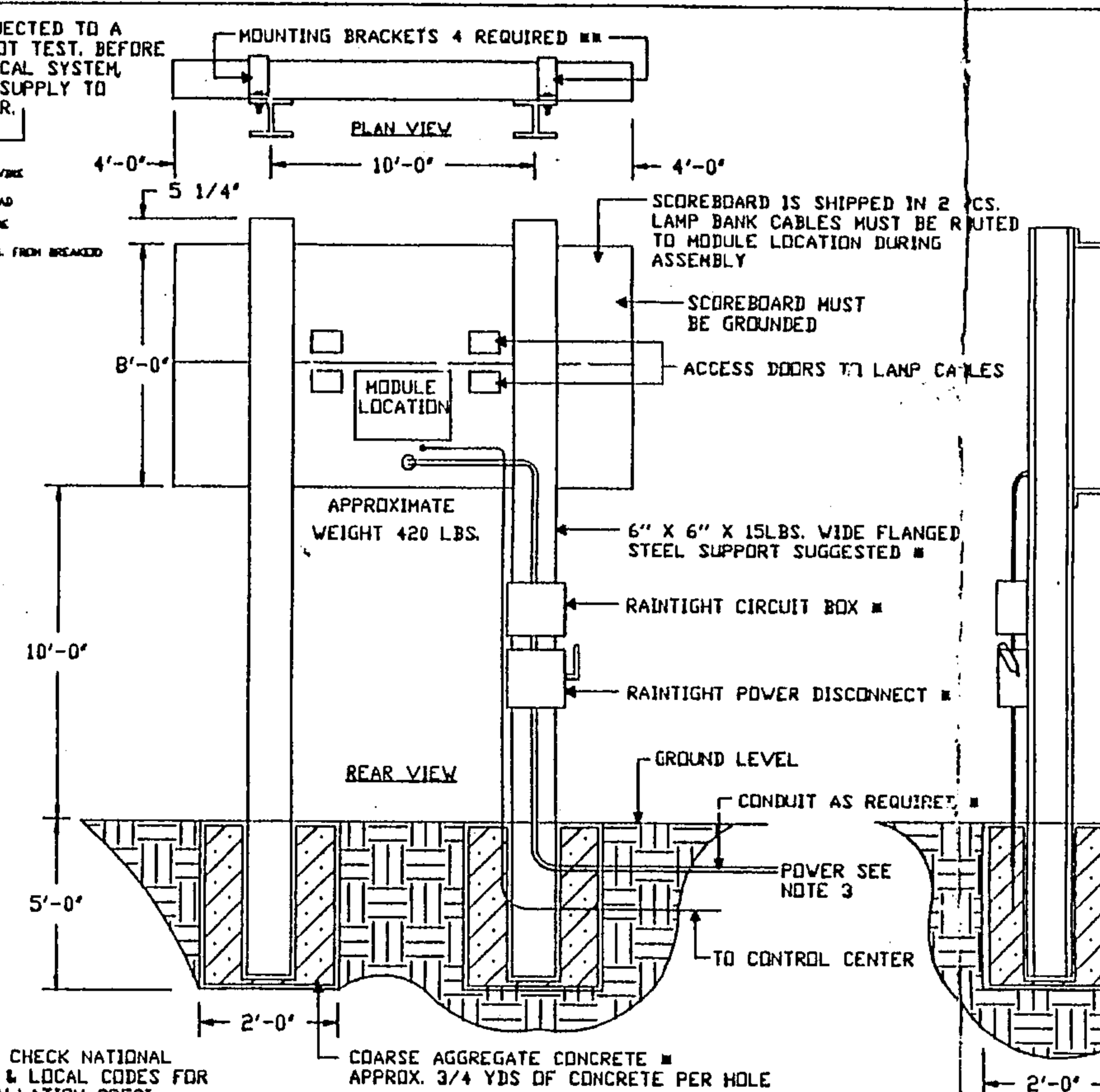
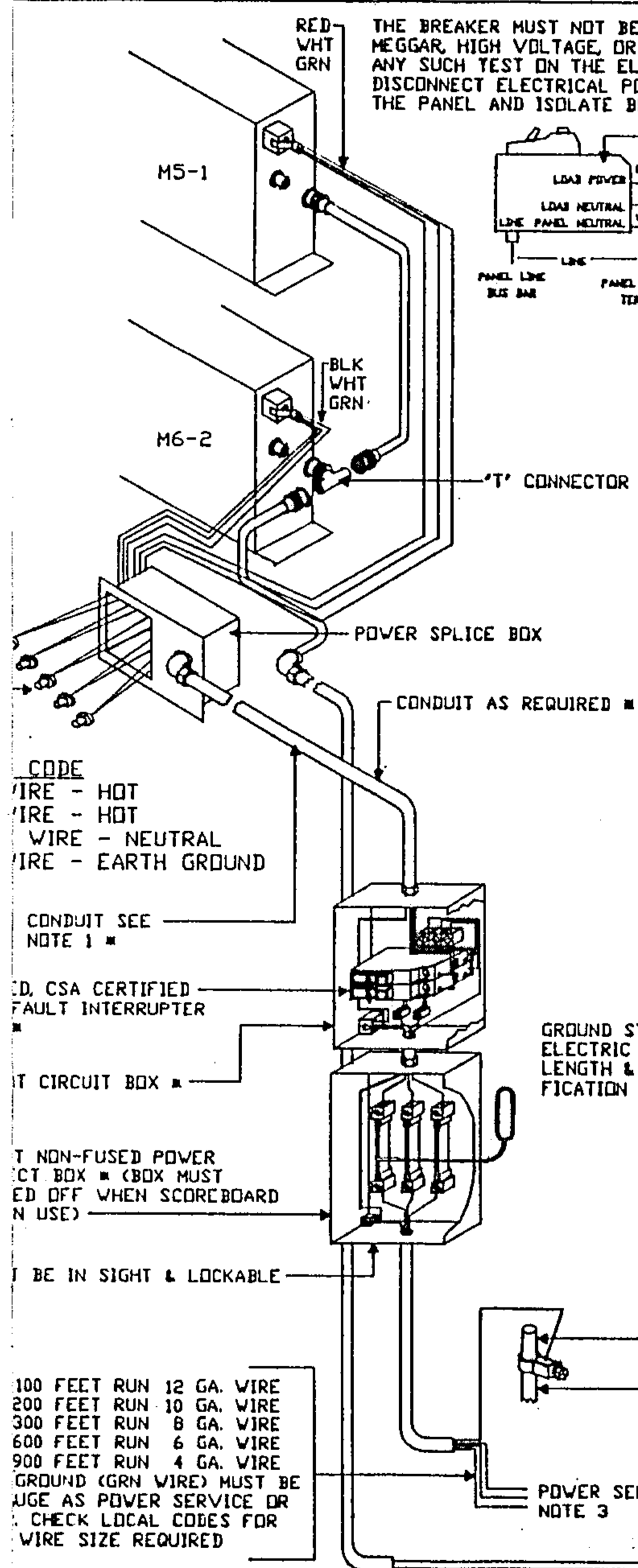
THE BREAKER MUST NOT BE SUBJECTED TO A MEGGAR, HIGH VOLTAGE, OR HI-POT TEST, BEFORE ANY SUCH TEST ON THE ELECTRICAL SYSTEM, DISCONNECT ELECTRICAL POWER SUPPLY TO THE PANEL AND ISOLATE BREAKER.



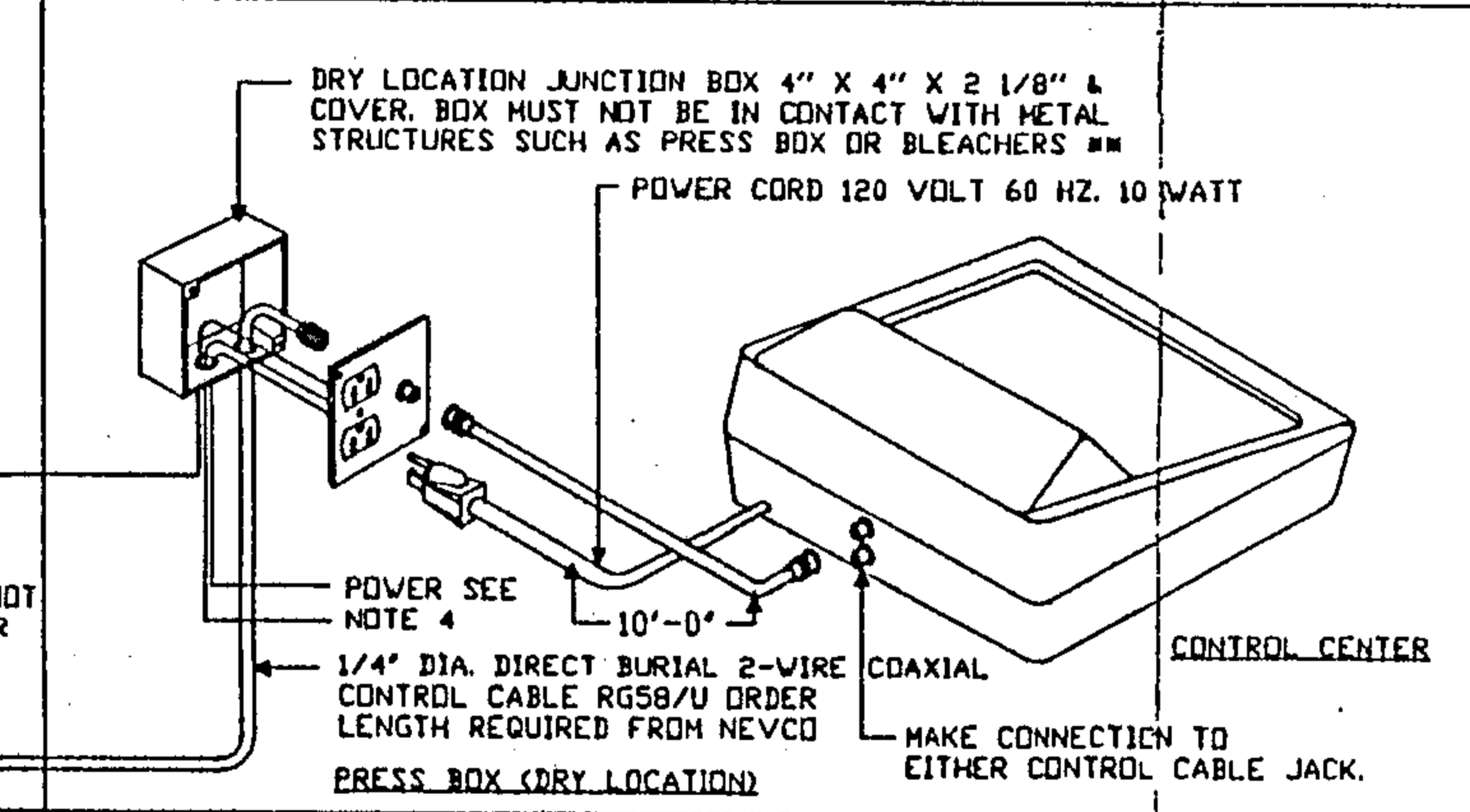
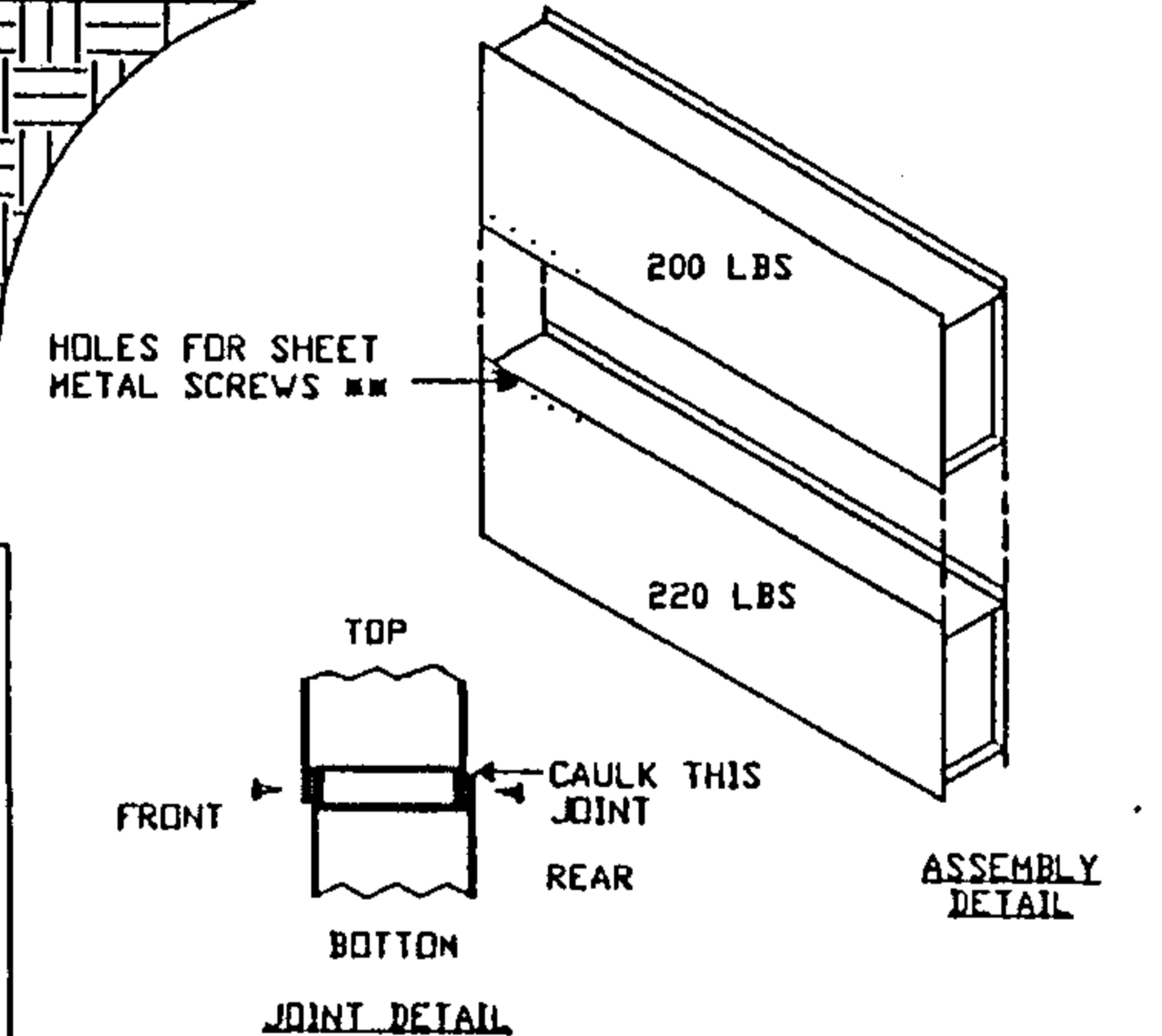
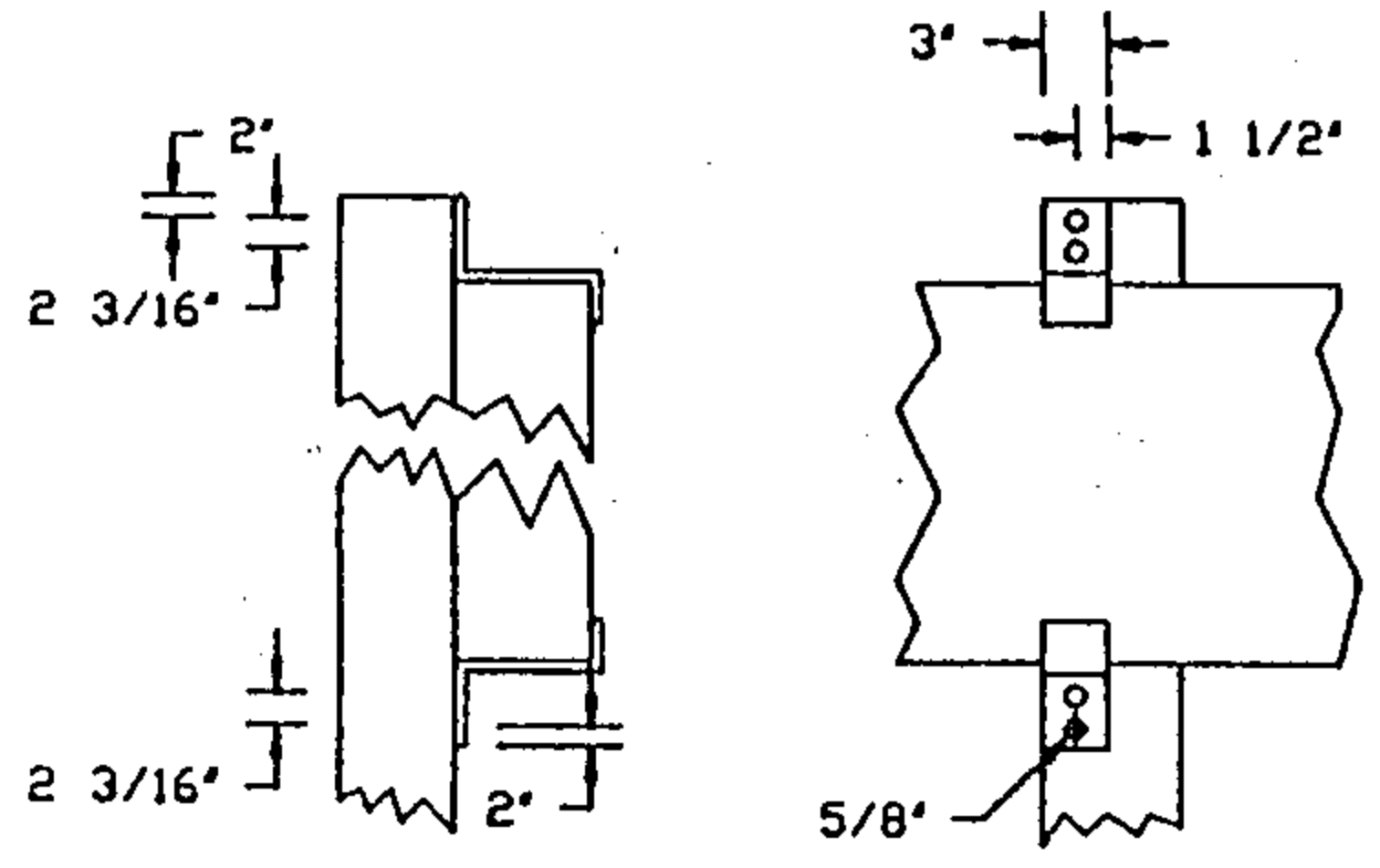
GROUND STAKES CHECK NATIONAL ELECTRIC CODE & LOCAL CODES FOR LENGTH & INSTALLATION SPECIFICATION *

THIS STAKE MUST NOT BE USED FOR OTHER APPLIANCES

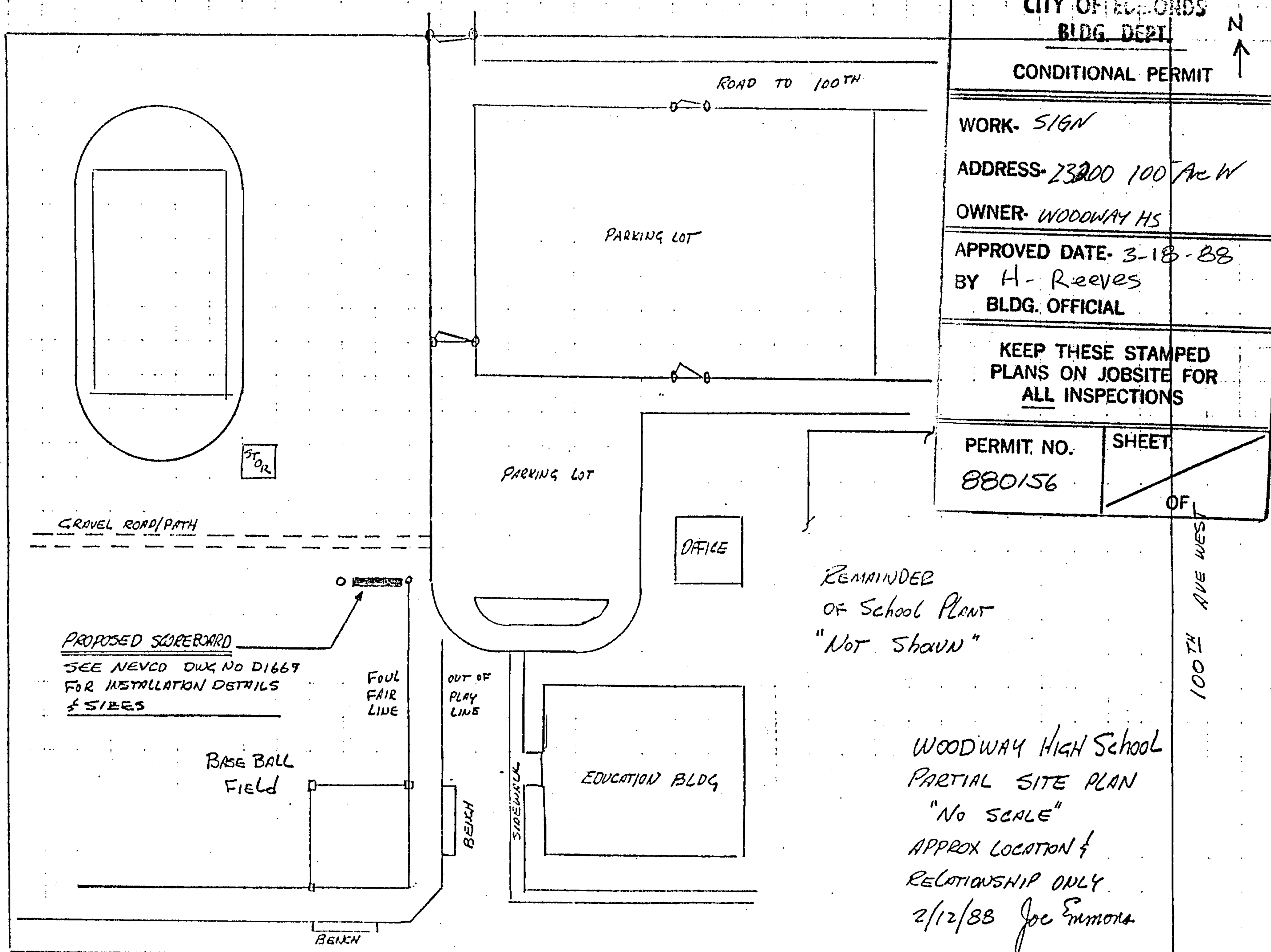
| | | |
|-----------------------------------|--|---|
| INSTALLATION, 1002 | | NEVCO SCOREBOARD CO. GREDVILLE, ILLINOIS 62246 |
| DRAWN HW DATE 1/2/75 SHEET 1 OF 1 | | |



- NOTES
- ITEMS SUPPLIED BY OWNER
 - ■ ITEMS SUPPLIED BY NEVCO
1. FOR CONDUIT INSTALLATION 1/2" CONDUIT REQUIRED REMOVE CONNECTOR TO PULL CABLE THROUGH CONDUIT. OPTIONAL: INSTALL 1" CONDUIT AND PULL CABLE WITH CONNECTOR THROUGH CONDUIT.
 2. INSTALLATION MOUNTING IS SUGGESTED METHOD ONLY AND MAY VARY DEPENDING ON SOIL CONDITIONS AND LOCAL CODES.
 3. SUGGESTED POWER AT SCOREBOARD 230/115 V. 60 HZ. 20 AMP
 4. PROTECT WITH A UL LISTED, CSA CERTIFIED GROUND FAULT INTERRUPTER INSTALLED PER NATIONAL ELECTRIC CODE.



| | | |
|----------------------|--|--|
| INSTALLATION 1002 | | NEVCO SCOREBOARD CO. GREENVILLE, ILLINOIS 62246 |
| DRAWN HW DATE 1/2/75 | | |
| | | SHEET 1 OF 1 |



| | |
|---|-------------|
| CITY OF EDMONDS BLDG. DEPT. | |
| CONDITIONAL PERMIT | |
| WORK- SIGN | |
| ADDRESS- 23200 100 Ave W | |
| OWNER- WOODWAY HS | |
| APPROVED DATE- 3-18-88 BY H- Reeves BLDG. OFFICIAL | |
| KEEP THESE STAMPED PLANS ON JOBSITE FOR ALL INSPECTIONS | |
| PERMIT. NO. 880156 | SHEET OF |

REMAINDER
OF School Plant
"NOT SHOWN"

WOODWAY High School
PARTIAL SITE PLAN
"NO SCALE"
APPROX LOCATION &
RELATIONSHIP ONLY
2/12/88 Joe Emmons

RECEIVED

MAR 9 1988

PERMIT COUNTER